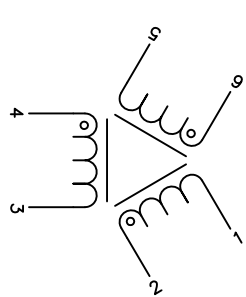
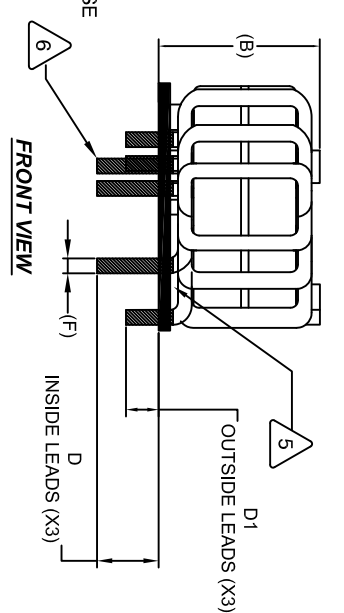


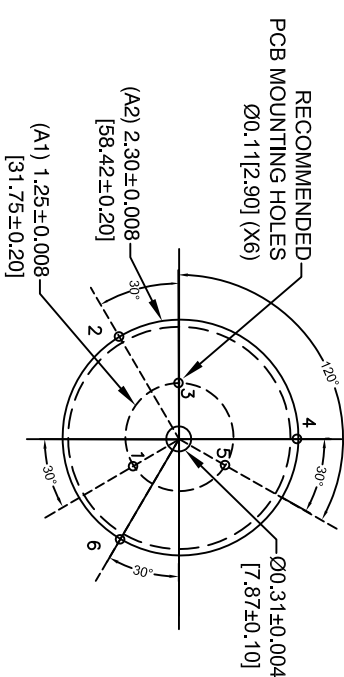
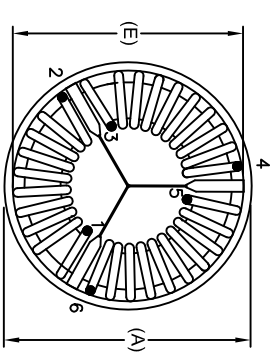
The information contained in this drawing is the sole property of Coil Winding Specialist Inc. (CWSI). Any reproduction in part or whole without written permission of CWSI is prohibited.

DIMENSIONAL TOLERANCE INCHES [MM]				REVISION HISTORY							
A(OD) Max	B(HGT) Max	D1(LEAD) Min	D(LEAD) Min	E TYP	F (Lead Dia) TYP	REV	ECN	DESCRIPTION	BR	DATE	SIGN & DATE
2.60 [66.00]	1.46 [37.00]	0.50 [12.70]	0.75 [19.05]	2.52 [64.00]	0.10 [2.59]	A		PRODUCTION RELEASE	TN	01/18/2021	01/18/2021

- BUILT TO ROHS COMPLIANCE
- LABEL PART NUMBER AT THE BOTTOM OF THE BASE.
- TRIM INNER LEADS TO 0.75 AND OUTER LEADS TO 0.5 INCH FROM BOTTOM OF BASE
- APPLY EPOXY BETWEEN COIL AND BASE
- STRIP AND TIN LEADS (NO INSULATION IS ALLOWED BELOW THE BASE LEVEL.)



- WEIGHT = 264 GRAMS TYP  
OPERATING TEMP RANGE = -40°C TO 125°C  
MAX TEMP RISE = 30°C WITH SOME AIR FLOW  
HIPOT TEST FOR INTERWINDING ISOLATION = 2000 VOLTS RMS.  
DCR ON EACH WINDING = 4.20 mΩ MAX.  
LEAKAGE INDUCTANCE = 15.45μH TYP @ 10 KHZ, 25Vrms  
RATED VOLTAGE = 1000 VAC OR VDC  
RATED CURRENT = 30 AMPS  
SRF = 543KHz TYPICAL  
INTERWINDING CAPACITANCE = 18pF TYP @ SRF  
IMPEDANCE = 7.2KΩ TYP @ SRF  
L = 11nH TYP @ 1KHz, 0.25 Vrms, 0 ADC  
SPECIFICATIONS AT 25°C:
- WIRE: UL RECOGNIZED 200°C RATED MAGNET WIRE  
CWS BYTEMARK OR OTHER APPROVED PART  
CORE: NANOCRYSTALLINE OR AMORPHOUS CORE
- CASE RATING CLASS H (180°C) REQUIRED  
MATERIAL: UL RECOGNIZED FOR FLAMMABILITY



- ANY TOLERANCE. THIS DIM. CAN VARY A LITTLE FROM PART TO PART.  
"TYP" IN DIM. TABLE REFERS TO A NON-CRITICAL TYPICAL (AVERAGE) DIM. WITHOUT NOTES: UNLESS OTHERWISE SPECIFIED, READ NOTES FROM BOTTOM TO TOP.  
CAGE CODE: 5DMIE2

UNLESS OTHERWISE SPECIFIED		AUTOCAD		TITLE:	
DIMENSIONING AND TOLERANCE PER ANSI Y14.5M	ALL DIMENSIONS ARE IN INCHES AND [MILLIMETERS]	SIGN	DATE	www.coliws.com	353 West Grove Ave Orange, California 92865
TOLERANCE INCHES: ±0.005	TOLERANCE METERS: ±0.127	DRWN	TN	01/18/2021	Coil Winding Specialist Inc.
ANGLE PROJECTION: 1ST ANGLE	DO NOT SCALE DRAWING	ENGR.	JL	01/18/2021	Nanocrystalline Inductor
		APPR.	JL	01/18/2021	Three-Phase Common Mode Choke
					Horizontal Mount
					SIZE [DIM. NO.] TPD-113U-B30A
					SCALE N/A
					SHEET 10F
					REV A